

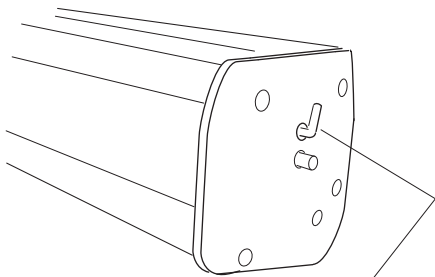
Fitting Your Budget Roll Up Banner

Choice of banner material.

Smooth surface light-weight rigid roll materials are recommended such as 125micron grey backed polyester or 220micron matt opaque PVC. Other materials can be used but testing is essential.

Avoid use of reinforced PVC banners and materials >300micron thick.

Artwork templates are available upon request.



IMPORTANT - DO NOT remove the locking pin until shown.

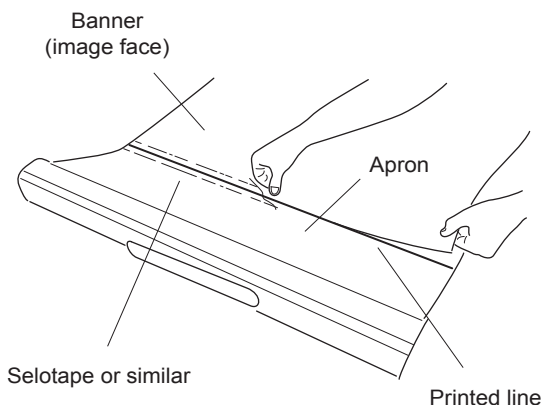
② Fitting bottom of banner to the cannister 'apron'.

Remove the protective strip from the tape on the apron. Apply the banner with the image face side upwards.

IMPORTANT

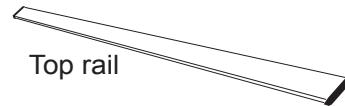
1. Use a strip of thin self adhesive tape, Sellotape or similar, to cover the join on both sides to aid smooth entry and exit of banner.
2. Apply firm pressure* along the length of the bonded area using a seam roller or thumb to ensure best adhesive consolidation

*

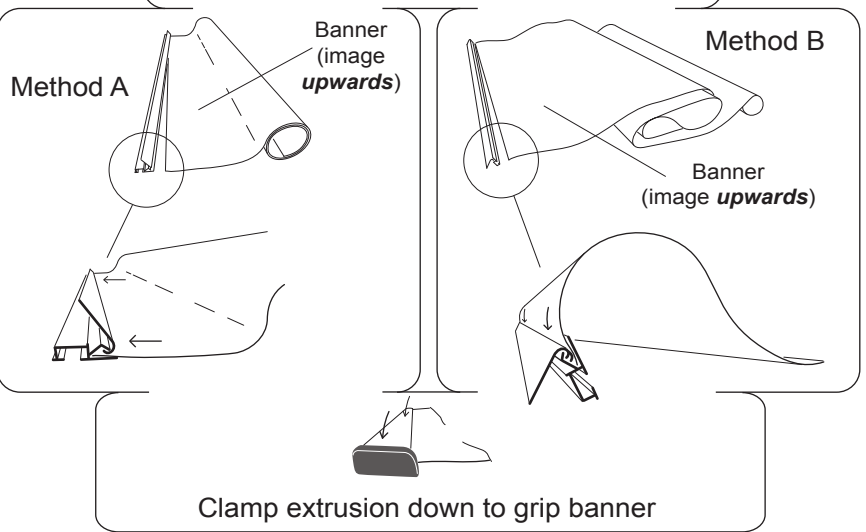


①

Fit top of banner to top rail.



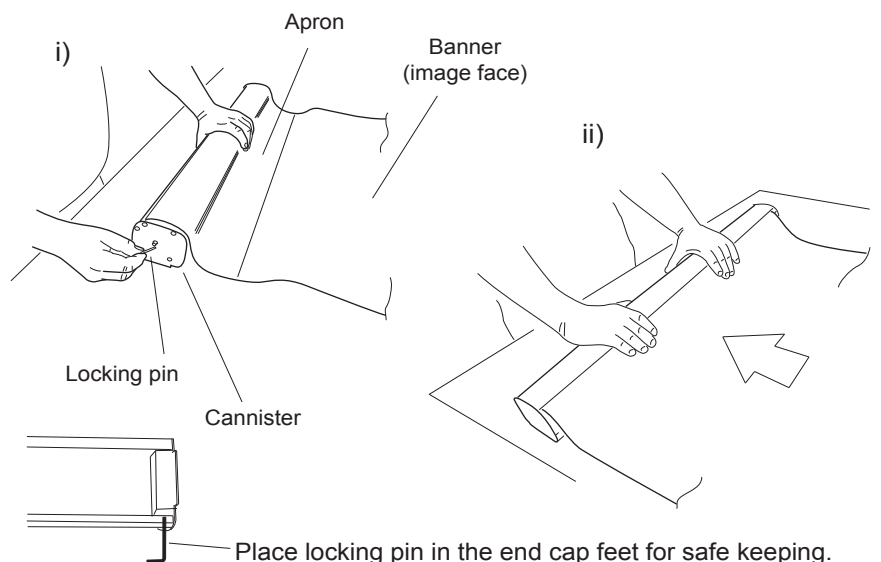
Feed the banner with the image face side upwards into the extrusion using your preferred method. (As shown below).



③

Loading the banner.

- i) With the image face side upwards, hold the apron against the cannister & slowly remove the locking pin.
- ii) Grip the banner against the cannister & let it slowly, fully retract.



***Allow 24 hours if possible between fixing banner and erecting unit to allow adhesive bonds to properly cure.**